



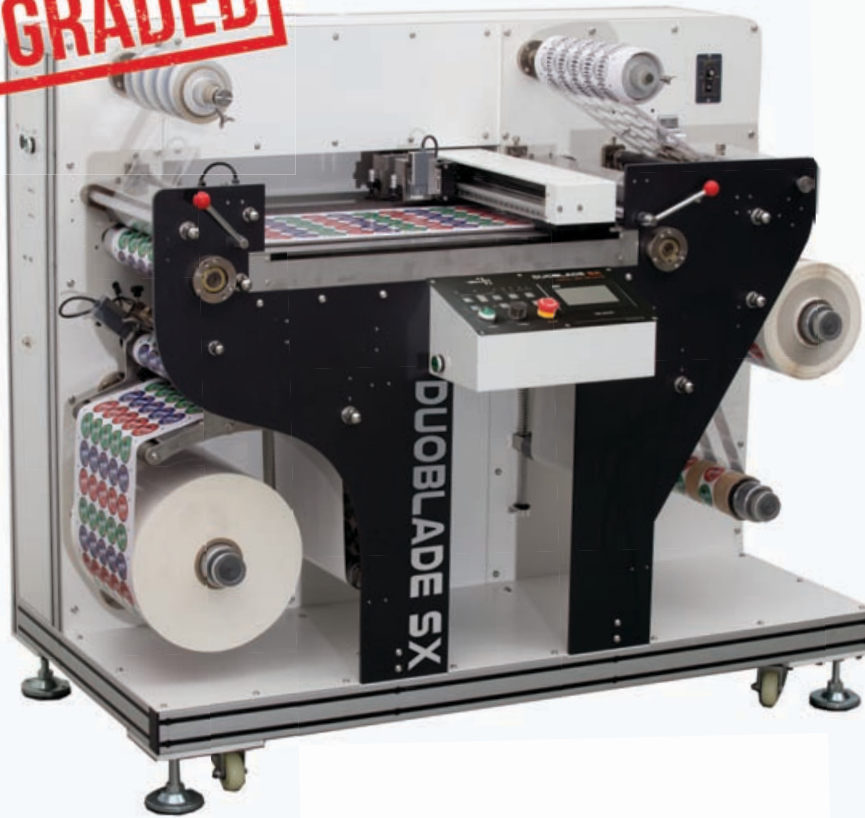
ON-DEMAND PRODUCTION OF LABEL & PACKAGE  
IN RIGHT TIME, RIGHT PLACE & RIGHT QUANTITY



ROLL-TO-ROLL MULTI-BLADE  
DIGITAL LABEL DIE-CUTTER

# DUOBLADE SX

**UPGRADED**



DuoBlade SX is the most affordable digital label finishing machine with sophisticated controllability at commercial level quality and speed.

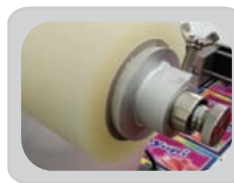
No. of cutting head	Cutting speed
1	1X
2	2.5X
3	4X
4	6X

## FEATURE



### MULTI BLADE (MAX. 4 UNITS)

Faster by multi-blade (default 2)  
Independent control of each blade  
Full-cut & kiss-cut at the same time  
Powerful servo-driven X-Y motions



### INLINE COLD LAMINATING

Embedded cold laminating unit  
Simultaneous registration control using fine adjustment knob at the bar end  
Use of self-supported laminating film



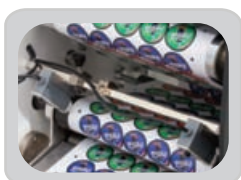
### INTUITIVE CONTROL PANEL

Orderly man-machine interface  
Multi-lingual LCD touch panel  
Easy access to control blade pressure, cutting position, speed and etc.



### INLINE SLITTING & SEPARATION

Supporting up to 15pcs slitters (default 4)  
Individual control of depth and position  
Simultaneous registration control of all slitters together using fine adjustment knob



### WEB GUIDE SYSTEM

Default embedded web guide system to correct media feeding straightness  
Guaranteed consistent accuracy in slitted mini rolls after slitting.



### MEDIA CONNECTING PLATE

Embedded edge-to-edge connecting plate  
Easy installation of new rolls with keeping straight feeding path in stable way  
Minimized loss and media installation time



### AUTO TENSION CONTROL

Magnetic powder brake for each of unwinder and 2 rewinders  
Electrical control of individual tensions on the LCD panel easily and precisely.



### PNEUMATIC EXPANSION ROLLERS

One touch push buttons on side panel to load and unload media rolls easily  
Pneumatic expandable bobbins applied in each of unwinder and 2 rewinders



ON-DEMAND PRODUCTION OF LABEL & PACKAGE  
IN RIGHT TIME, RIGHT PLACE & RIGHT QUANTITY



# SPECIFICATIONS OF DUOBLADE SX

PERFORMANCE	ALL INCLUSIVE	SPECIAL	USER-FRIENDLY
Multi-blade Up to 4 Heads	Laminating Unit & Matrix Removal	Web Guide Control System	TCP/IP Interface
Max 5.5m/min Cutting Speed	Slitting Unit up to 15pcs	Split-Cut for long label	USB Memory
0.2mm Accuracy Tolerance	2nd Rewinder as default	Full & Kiss-cut at the same time	Cut & Connect Media Plate
Max 80m/min Slitting Speed	Trimming	Exclusive Slitting mode	Pneumatic Core Expansion
		Electric Tension Control System	Realtime Control Speed & Pressure

- Exclusive control software
- Supporting Corel & Illustrator
- Vacuum bed by air pump
- Media width 40~340mm
- Max. roll diameter 450mm
- Cutting area 320 x 420mm
- Cutting speed max. 5.5/min
- Cutting precision 0.2mm
- Slitting speed max. 80m/min
- Slitting width 10 ~ 330mm
- Slitting precision 0.2mm
- Tungsten steel rotary blade
- Power 100 ~ 240 VAC, 1KW
- High Capa 750w X-Y Servo
- Size 158 cm x 90 cm x 136 cm
- Weight 450 kgs

Vacuum pad for accurate registration



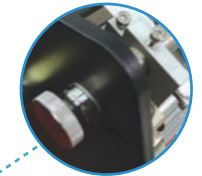
Cutting by multi cutting heads up to max.4pcs



Easy waste removal



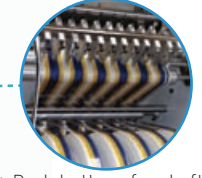
Fine position control of all slitters together



Laminating unit with fine control knob



Slitting units up to max.15pcs



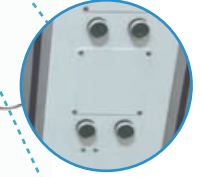
Individual tension control by magnetic powder brake



Web guide sensor with fine control knob



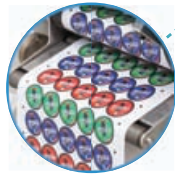
Push buttons for shaft expansion and tension



X-Y motion control by 750W High-capacity Servo



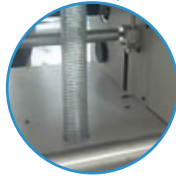
Cut & Connect Media plate



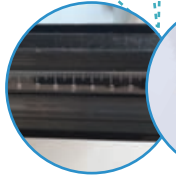
Touch screen control panel



Vacuum pump



Pneumatic shaft with ruler



LAN : Remote control  
USB : Computerless work



Rm 1017 Daemyung Valeon 127 Beobwon-ro Songpa-gu Seoul 05836 Republic of Korea  
Tel: +82 -2-6082-5022 Fax: +82-2-445-5441 E-mail: support@valloy.net www.valloy.com